



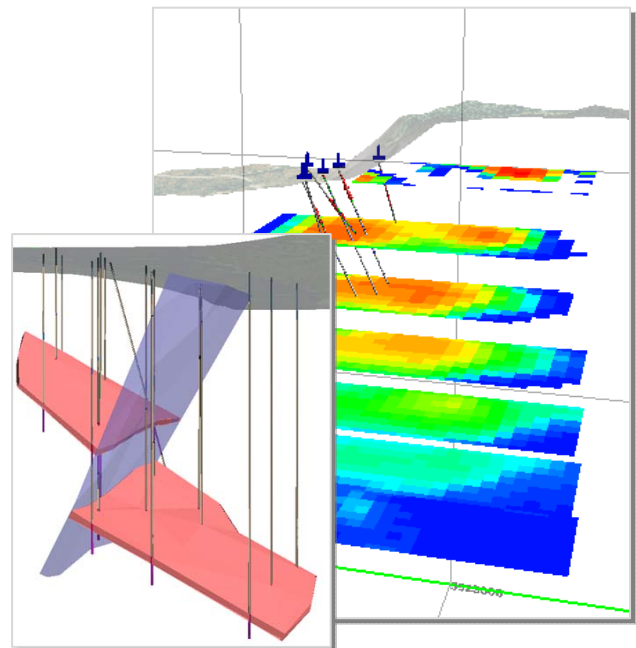
## Discover 3D for Mineral Exploration

### Vancouver BC, January 26-27, 2012

This two-day Discover 3D course focuses on mineral exploration planning and targeting using integrated drilling, geophysical, geochemical and imagery data. Building upon 2D MapInfo and Discover skills, the course will familiarize users with common 3D visualization, analysis and modeling functions. The course consists of a series of lectures and hands-on exercises and includes a workbook for each attendee. **Each attendee requires a working knowledge of MapInfo Professional and Encom Discover, their own laptop computer, MapInfo Professional 11 and Discover3D 2011. Older versions of the software are not suitable for this course.** If you do not have these software versions, free evaluation licenses can be provided to you for the duration of the course. Please contact McElhanney asap if you require an evaluation license. Software, including evaluation licenses, must be installed before the course date.

#### Topics covered include:

- Discover 3D Interface
- 3D Navigation
- 3D Cursor Plane
- Preparing 2D data for 3D Display
- Surface and Cross-Section imagery
- 3D Point and Line data
- Vector Data
- Gridded Surface Files
- Voxel Model Display and Queries
- 3D Digitizing
- Drill Hole Data Display
- Drill Hole Planning
- Geological Modeling - Surface and Solid Generation, Voxels and Vectors
- Animation and Video output



**Price: \$895 per person + tax**

Name: \_\_\_\_\_

Company: \_\_\_\_\_

Address: \_\_\_\_\_

Telephone: \_\_\_\_\_ E-Mail: \_\_\_\_\_

Credit Card Type:  Visa  MasterCard

Expires: \_\_\_\_\_

Card Number: \_\_\_\_\_

Name on card: \_\_\_\_\_

**Fax to: 604-683-4350 E-Mail: [amcintosh@mcelhanney.com](mailto:amcintosh@mcelhanney.com)**

**Phone: Andrew McIntosh or Irene Cole, 604-683-8521**



Time and location: 8:45 AM to 4:15 PM; 100 – 780 Beatty Street, Vancouver BC.

**Cancellation Deadline, 12 noon, Pacific Time, Jan 23, 2012.** 50% of course fee may be retained for late cancellations. Course does not cover resource calculations.